



MISSISSIPPI STATE RATING BUREAU

P.O. BOX 5231, JACKSON, MISSISSIPPI 39296-5231
6455 WIRTZ ROAD, FLOWOOD, MISSISSIPPI 39232-7801
TELEPHONE (601) 981-2915 • FAX (601) 981-2924

November 16, 2016

TO ALL INTERESTED AGENTS:

CHANGE IN PUBLIC FIRE PROTECTION
CLASSIFICATION
EUDORA FIRE PROTECTION DISTRICT
DESOTO COUNTY, MISSISSIPPI

We are pleased to advise that effective November 15, 2016, the classification of the Eudora Fire Protection District, Desoto County, Mississippi, changed from SEVENTH CLASS to SIXTH CLASS.

This public protection classification applies to eligible properties (properties having a needed fire flow of 3,500 gallons per minute or less) located within the legal boundaries of this District, within five (5) road miles of the responding fire department serving the District and within 1,000 feet of a standard public fire hydrant. Properties not within 1,000 feet of a standard public hydrant will receive the split classification (6X).

The fire department for this District DOES PROVIDE PRIMARY RESPONSE to residential fires outside its legal boundaries.

To assist you in determining the properties included in the Eudora Fire Protection District, we are enclosing a map showing the boundaries of the area.

When issuing daily reports and endorsements, you must show location of the property covered to be in the Eudora Fire Protection District, Desoto County, Mississippi.

Any insurance contracts covering dwellings located in this District may be endorsed from November 15, 2016, on a pro rata basis to take advantage of the current fire premiums indicated in our Mississippi Dwelling Manual.

Comprehensive Dwelling Policies and Homeowners Policies also may be endorsed on a pro rata basis to take advantage of applicable rates or premiums.

It will be necessary that we survey or resurvey and publish or republish loss costs for specifically rated mercantile and special class risks affected by this change in classification. If you have a specific mercantile or special risk that you feel is affected by this classification change, please advise our Rating Department so we will be able to schedule a survey by our district representative. Properties that have a needed fire flow greater than 3,500 gallons per minute require an individual property fire protection classification.

(OVER)

TO ALL INTERESTED AGENTS

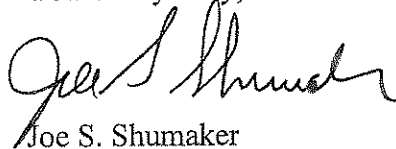
-2-

November 16, 2016

A computer printout will be mailed to those who submit a specific request. The effective date of the loss costs will be made retroactive to November 15, 2016.

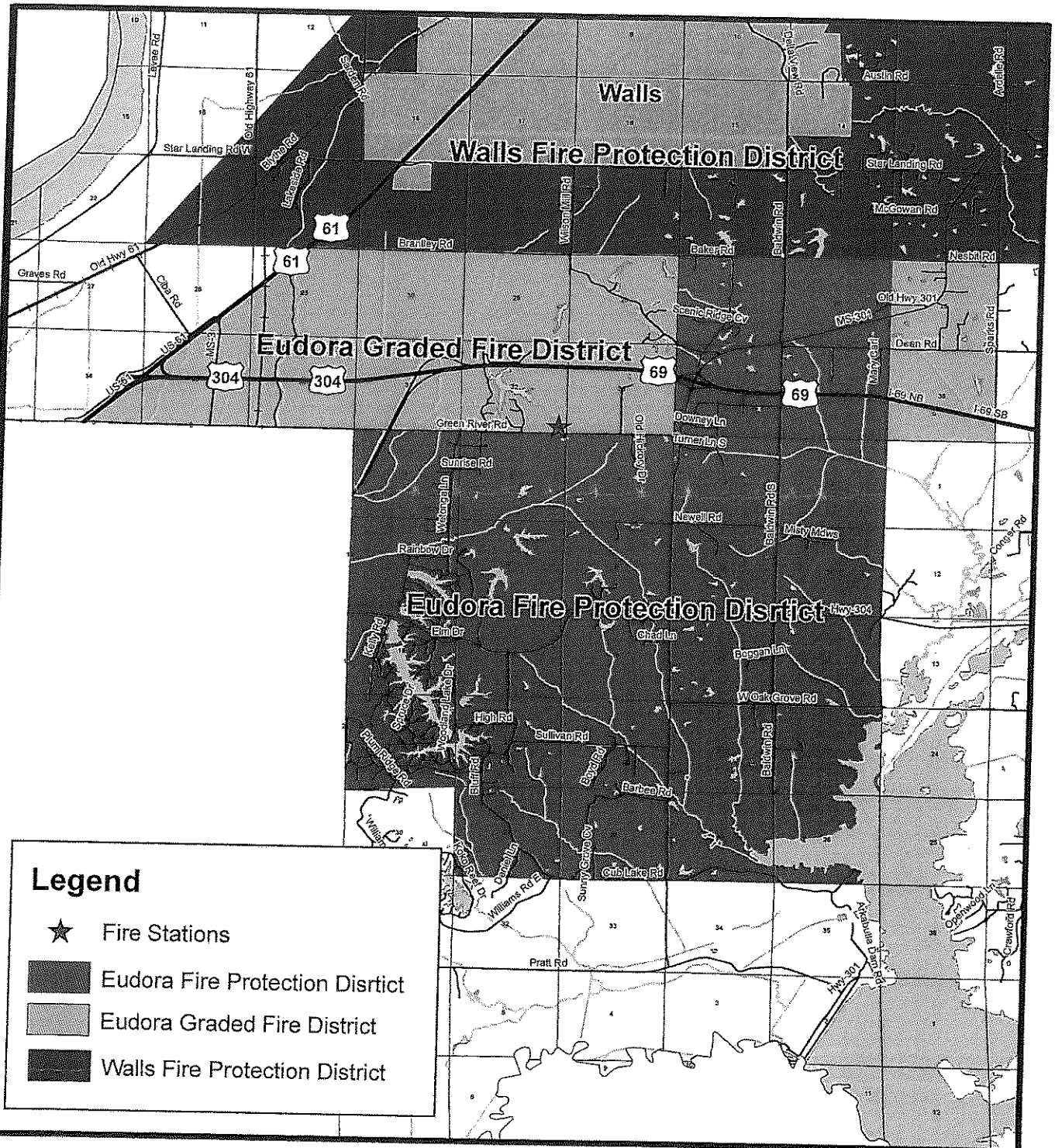
Following publication of information for class rated properties and rates for specifically rated properties, policies which cover these properties, and which have inception on or after November 15, 2016, may be endorsed from inception to the new rates, while policies having inception prior to November 15, 2016, may be endorsed from November 15, 2016, to expiration on a pro rata basis. In calculating the net rates and premiums for these endorsements, the inception date of the policy or the last endorsed anniversary date determines the rate adjustment, if any, applicable.

Yours very truly,

A handwritten signature in black ink, appearing to read "Joe S. Shumaker". The signature is fluid and cursive, with a large initial "J" and "S".

Joe S. Shumaker
Manager

jb



EUDORA FIRE PROTECTION DISTRICT DESOTO COUNTY

MISSISSIPPI STATE RATING BUREAU
PO BOX 5231
JACKSON, MISSISSIPPI 39296

PUBLISHED NOVEMBER 2016

